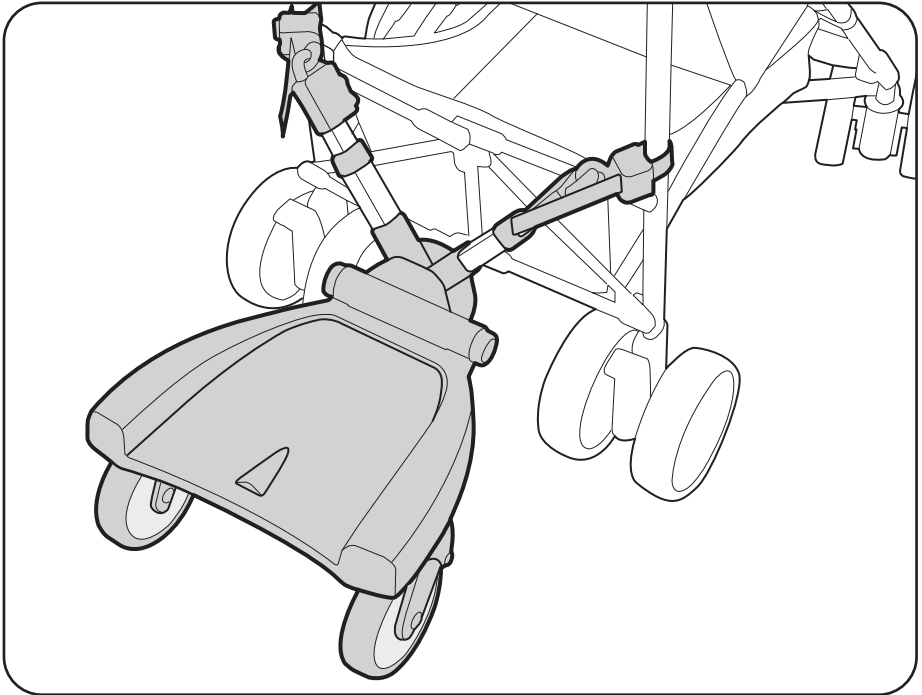


► INSTRUCTIONS

guzzie+GUSS[®]

G+G001 Universal Hitch



Please read the instruction manual very carefully before using the product.
Please preserve the instruction manual properly for future reference.

Introduction

The product you have just purchased is one of the most innovative stroller accessories to be developed in the 21st century. Guzzie+Guss are committed to making the lives of children and parents safe, uncomplicated and convenient. We would like to thank you for purchasing this exciting product and hope that you enjoy using it. It is important that you read and follow the instructions in this manual carefully. Please make sure all the parts are properly attached and the removable pieces fit on correctly. Please pay close attention to the opening and closing mechanism. Be sure to read all warnings and safety steps before use.

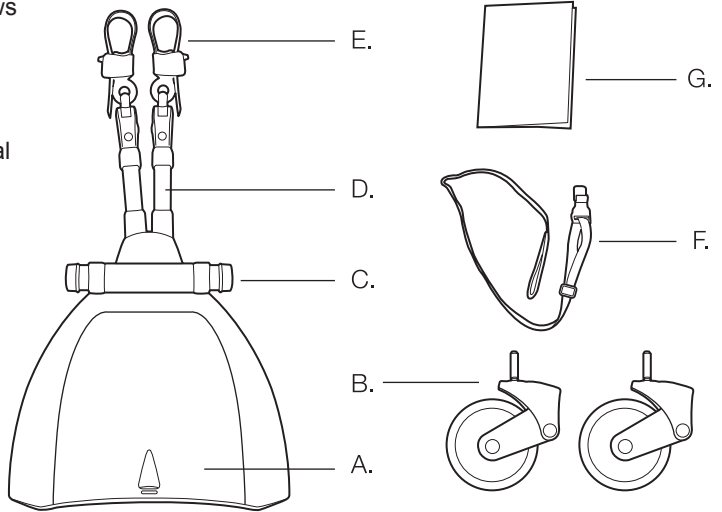
Important

After completely reading and following all instructions in this manual, please file the instruction manual in a safe place for future reference. If the product you have received operates differently from instructions included with the product please contact guzzie+Guss on the internet at info@guzzieandguss.com.

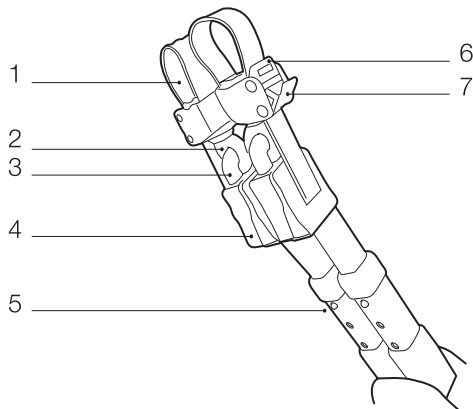
There you can obtain the most current manual for the G+G Universal Hitch. You can also register your product online for warranty purposes. Please be sure to have the registration number and the manufacturing date handy when you register.

Parts Included:

- A. Main Board
- B. Wheels (2 pcs.)
- C. Adjustment Screws
- D. Extension Base
- E. Connector Straps
(Left & Right)
- F. Storage Strap
- G. Instruction Manual

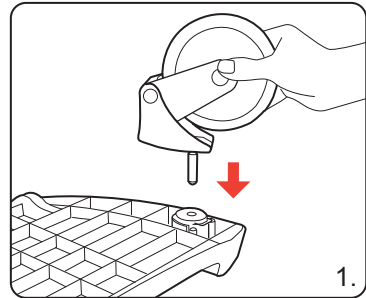


- 1. Belt
- 2. Connector Loop
- 3. Locking Hook
- 4. Lock Button
- 5. Adjustment Button
- 6. Fixed Buckle
- 7. Adjustable Buckle



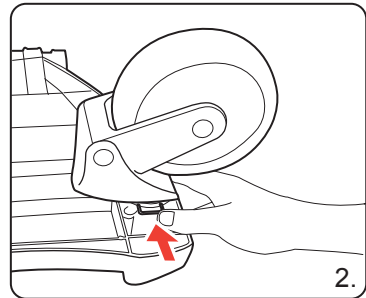
Attaching the wheels

Place the main board upside down on a flat surface. Push the wheels firmly into the intended support holes until you hear a “click”. (See image 1)



Detaching the wheels

Press and hold the metal key from the rear of the wheel to release. Remove wheels for cleaning, lubrication, or storage. (See image 2)



Preparing the connector

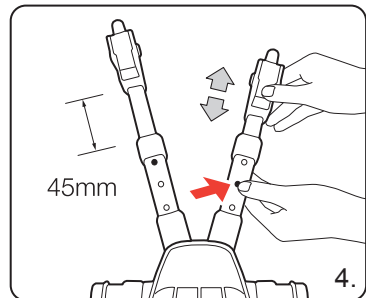
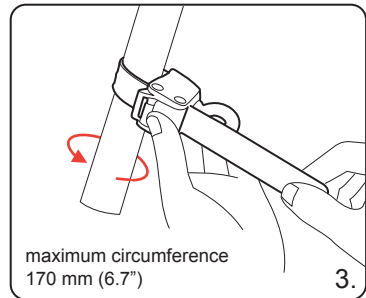
The maximum allowable circumference for stroller frame tube is 170 mm (6.7”).

Place the Universal Hitch near the desired position on your stroller and extend the connector to the suitable length. The maximum extension is 45 mm (1.77”).

Attention:

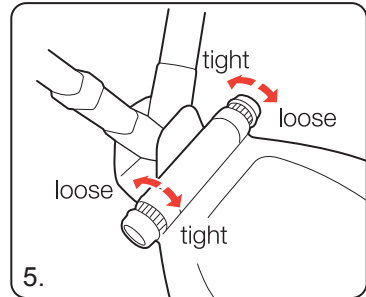
Be sure that all straps have been securely tightened to the stroller frame tube and are in a fixed position.

Ensure your stroller brake system is working properly, both prior to installing the connector, and also after the connector has been correctly installed.

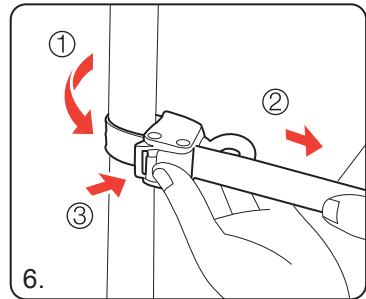


Attaching the Universal Hitch

1) Begin by loosening the adjustment screws on both sides. Screws need to be loose enough for the connector yoke to move freely. (See image 5)

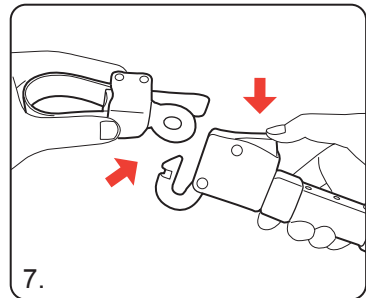


2) Attach the connector as in the diagram (see image 6). 1. Strap goes around stroller frame tube. 2. Strap goes through the adjustable buckle. Pull strap tight while pressing on the adjustable buckle. 3. Lock the fixed buckle to secure.



3) Adjust the extension arm to the suitable length. Depress the lock button and connect the locking hook to the connector loop. Release the lock button and insert the locking hook back into the lock until you hear a “click” (see image 7).

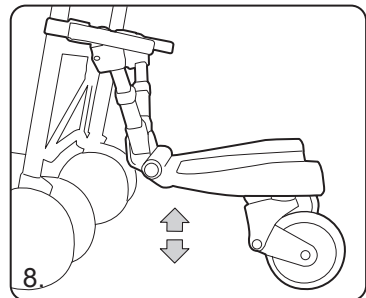
Depending on the brand of your stroller, you may need to adjust the sequence of installing your Universal Hitch as required.



4) Adjust the extension base to the suitable angle. Then tighten the adjustment screws.

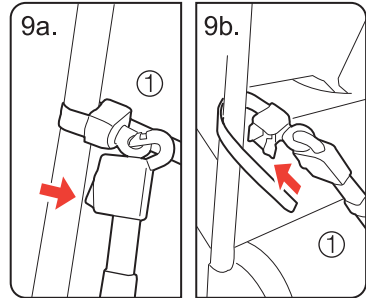
Attention:

Please make sure that the main board is fixed in a flat position for your child’s comfort and safety. If you are unable to find a flat position, angle the board slightly forward, and the suspension system will balance the board once your child steps upon it.

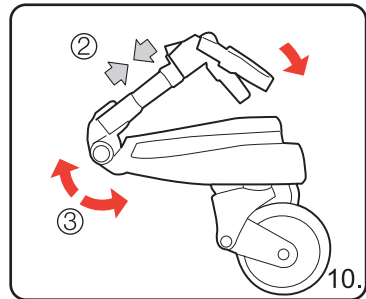


Disconnecting

1) There are 2 ways of removing the Universal Hitch when not in use. Disconnect the Hitch by pressing on the lock buttons and removing the hitch (see image 9a) or by completely removing the connectors (see image 9b).

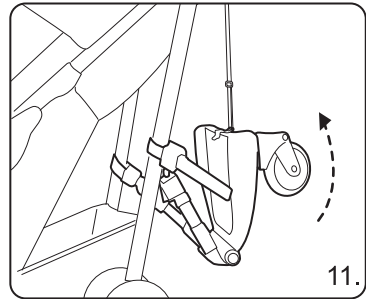


2) Adjust connector arms to shortest position. Loosen adjuster screws, and then rotate connector arms back over the main board. Retighten adjuster screws (see image 10).

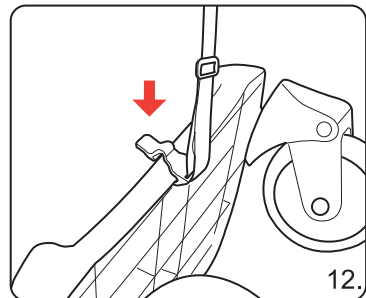


Temporary storage

1) Loosen the adjuster screws and rotate the extension base upward to the maximum (see image 11). Then retighten the adjuster screws.



2) Attach the storage strap to the back of the Hitch with the provided clip (see image 12). Then attach the other end of the stroller strap to the stroller handle or frame.



When you are NOT using your Universal Hitch, be sure to hang it from the back of your stroller to avoid creating a possible tripping hazard.

WARNING!

- The intended use is for 1 child at a time, approximate age of 2 years old, maximum weight of 20 kgs (44 lbs)
- Always keep your hands on the stroller when the child is standing on the G+G Board. NEVER LEAVE THE CHILD UNATTENDED.
- Make sure the child riding is standing with both feet directly upon the anti-slip material on the board.
- Before each use, check the connectors and tighten if necessary.
- Never engage the stroller parking brake while your child is standing on the G+G Universal Hitch.
- Do not use the G+G Universal Hitch if there are any broken, torn or missing parts.
- Never let children play with the G+G Universal Hitch, it is not a toy.
- The use of any accessories with the G+G Universal Hitch that have not been approved by the manufacturer is not recommended.

Maintenance

- Lubricate all moving parts including the wheels regularly, with an oil based lubricant.
- Check to make sure that no dirt or particles are stuck in the wheels, suspension, or other moving parts.
- Make sure to dry the Universal Hitch if it has gotten wet.
- When cleaning, use warm water, and clean cloth, all parts should be lubricated again after cleaning.
- If proper maintenance is not done, the Universal Hitch may not perform properly, and problems may occur.

Product registration and warranty

The G+G 002H Universal Hitch has a Limited Warranty for the period of 1 year from the date of purchase against defects in manufacturing or workmanship.

For warranty registration you can submit online at our website
www.guzzieandguss.com

Or mail your contact info and a copy of your proof of purchase to the address below.

Contact Info:

Peter John M. Distributions Inc.
88 SW Marine Drive, Vancouver, BC
Canada V5X 2R1

info@pjmdistribution.com

Tel	1-604-324-2851
Toll Free	1-888-597-0992
Fax	1-604-324-2876