

Hitch

Universal Stroller Board

Imported in North America by :
Peter John M. Distributions inc.
#114 - 6951 - 72nd street
Delta, BC, Canada V4G 0A2

info@guzzieandguss.com
1-888-597-0992

Please read this instruction manual carefully before using this product.
Be sure to save these instructions for future reference.

Thank you for purchasing the guzzie+Guss Hitch. Given all products out there, choosing the right product to fit your needs can be a challenge and we are honored that you have decided to go with guzzie+Guss. We are committed to producing quality products that offer clever solutions, and are easy to use, so that you can focus on having fun! Please do feel free to reach out to us with any questions, comments, or if you need assistance with your guzzie+Guss product.

IMPORTANT

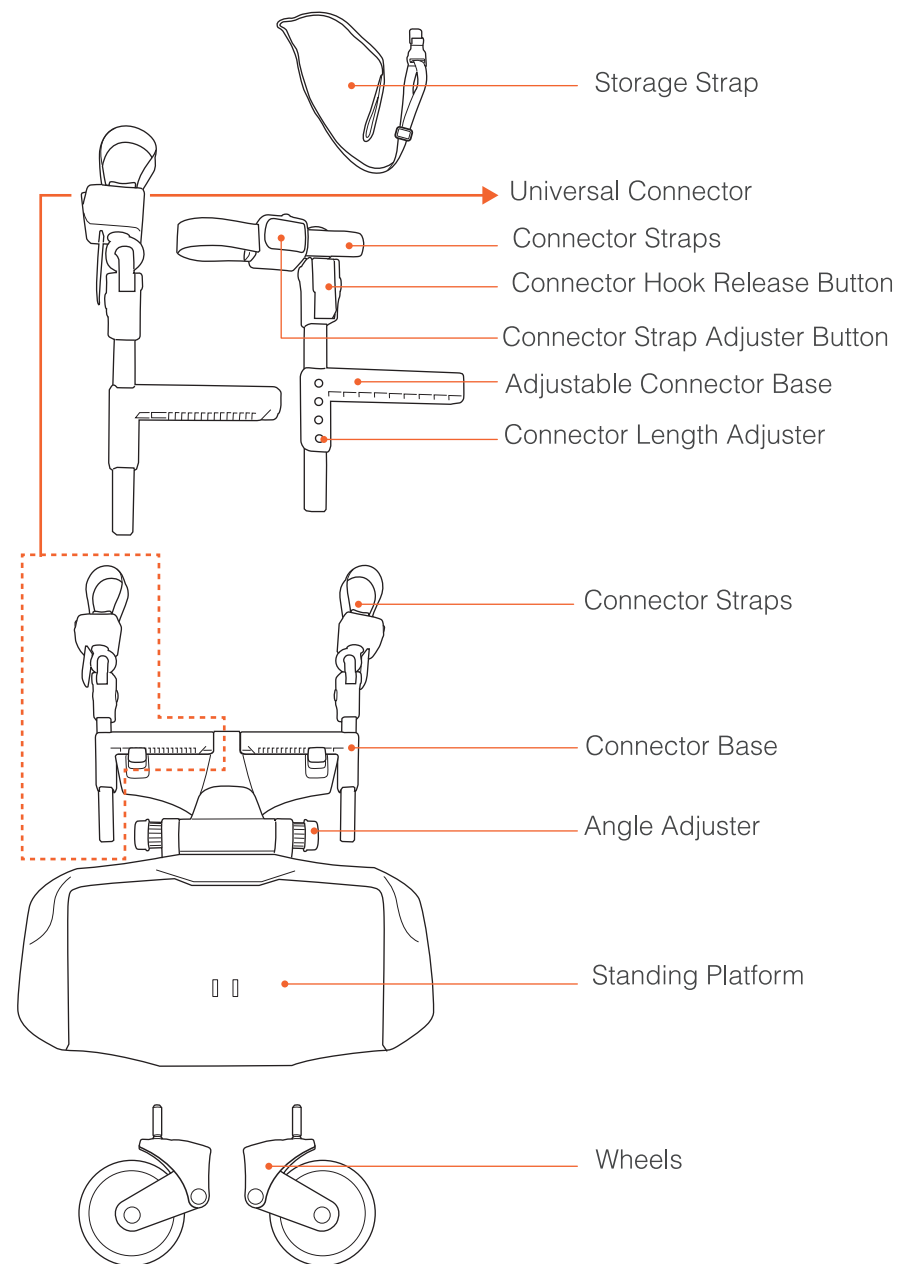
It is important that you read and follow the instructions in this manual. Please ensure that all parts are properly attached and moving parts are in working order. Read all warnings and safety precautions before using.

Having read and followed all instructions in this manual, please keep it in a safe place to review if necessary. If you have a problem with the assembly of the Hitch or use, please contact guzzie+Guss at info@guzzieandguss.com. A member of our team will be very happy to help you. You will be asked to provide us the serial number and date of manufacture; this information can be found on the underside of the board.

What is included in the box:

- 1) Standing Platform
- 2) Storage Strap
- 3) Wheels (x2)
- 4) Universal Connectors (x2)
- 5) Connector base including arms (2)

COMPONENTS



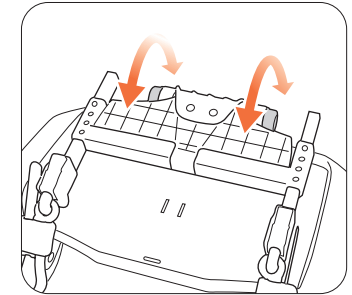
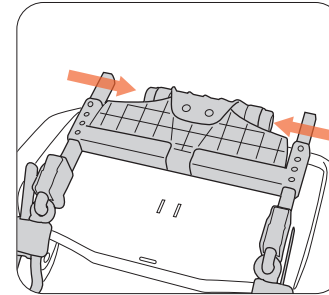
! WARNINGS

READ ALL INSTRUCTIONS BEFORE ASSEMBLY AND USE OF HITCH. KEEP INSTRUCTIONS FOR FUTURE USE

- Never leave your child unattended, even for a short time
- The intended use is for 1 child at a time, approximate minimum age of 2 years old, maximum weight of 28 kgs (62 lbs)
- Always keep your hands on the stroller when the child is standing on the Hitch. NEVER LEAVE THE CHILD UNATTENDED. There is a possibility of your stroller will go out of control and injuries may occur.
- Make sure they are standing with both feet on the anti-slip material on the board.
- Before each use, check that the connectors are secure and tighten if necessary.
- Do not use the Hitch, if there are any broken or missing parts.
- Never let children play with the Hitch, it is not a toy.
- The use of any accessories with the Hitch that have not been approved by guzzie+Guss is not recommended.

ASSEMBLY

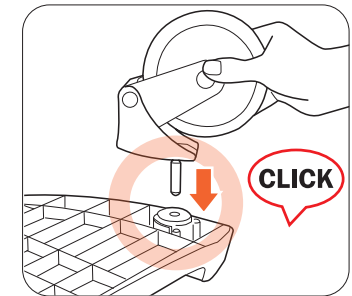
Unscrew the 2 Angle Adjuster Screws, this will allow you to rotate the standing platform till its flat.



Attaching the wheels

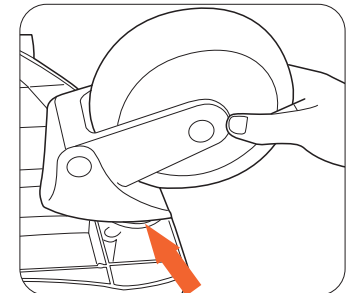
Place the main board upside down on a flat surface. Push the wheels firmly into the intended support holes until you hear a "click".

Pull back on the wheel after hearing the click to assure the wheel is properly attached.



Detaching the wheels

Using a strong flat head screwdriver for leverage (inserted between the wheel and the board) you can easily lever the wheels out of the support hole.

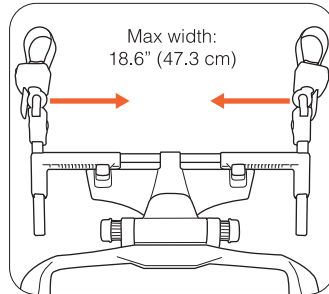
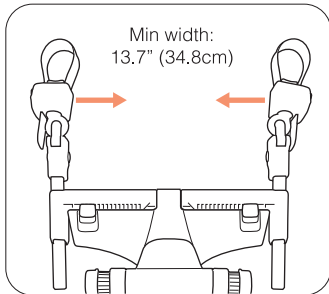
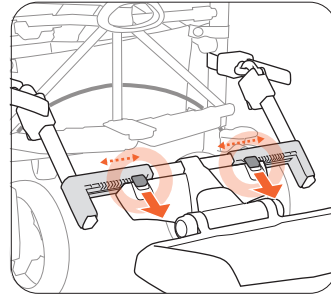


ASSEMBLY

Connectors

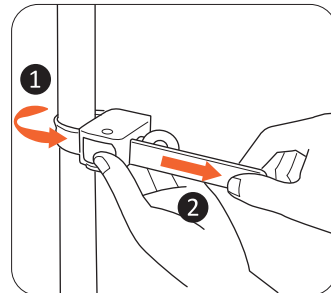
Slide the connector base(s) onto the angle adjuster so that the length adjustment is on the bottom. Adjust for them to the appropriate width of your stroller.

WARNING: Make sure that both sides are equidistant from the middle of the platform.



Attach the connector as in the diagram
Maximum Frame Circumference is 6.7"
(170mm)

1. Strap goes around stroller frame tube.
2. Strap goes through the adjuster button.
3. Pull strap tight.

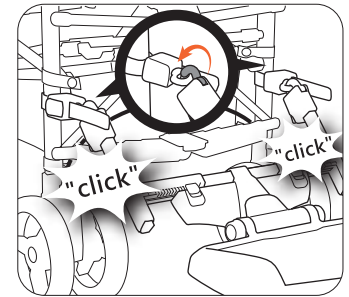


Ensure that your connectors are in the proper position and NOT able to be moved.

USING YOUR HITCH

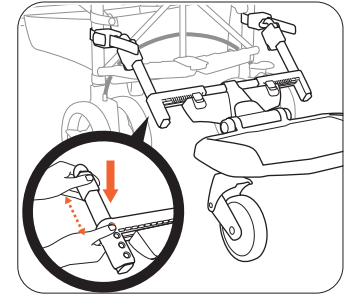
Attaching the Hitch

Push the Connector Hook release button to open the Hook, feed the hook through the eye of the Connector straps, and close the Hook. There should be a secure "Click".



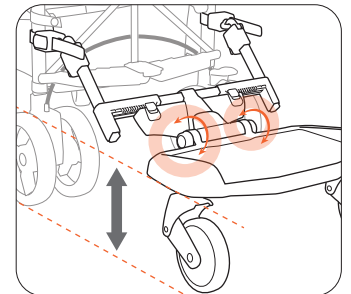
Adjust the Length adjuster to the correct length. Depress the lock button and connect the locking hook to the connector loop.

Depending on the brand of your stroller, you may need to adjust the sequence of installing your Hitch as required.



Loosen the adjustment screws on both sides. Screws need to be loose enough for the Angle adjuster to move freely.

Adjust to a suitable angle. Then tighten the adjustment screws.



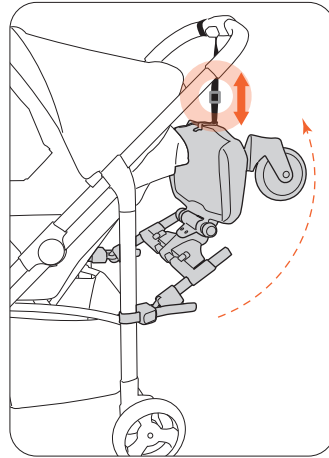
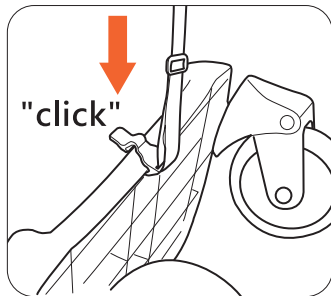
Attention:

Please make sure that the standing platform is fixed in a flat position for your child's comfort and safety. If you are unable to find a flat position, angle the board slightly upward, and the suspension system will balance the board once your child steps on it.

USING YOUR HITCH

Temporary Storage

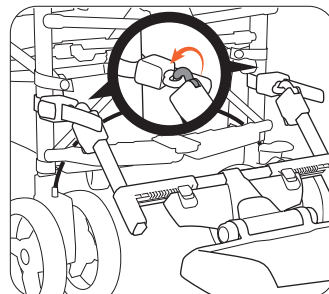
Attach the storage strap to the back of the Hitch with the provided clip. Then attach the other end of the stroller strap to the stroller handle or frame.



When you are NOT using your Hitch, be sure to hang it from the back of your stroller to avoid creating a possible tripping hazard.

Disconnecting the Hitch

Disconnect the Hitch by pressing on the Connector Hook release buttons and removing the hitch.



OPTIONAL ACCESSORIES (sold separately)

Hitch Seat

The Hitch Seat will let your young one rest while on longer outings. With an easy to adjust seat and a contoured seat, this will make riding easy and fun.



WARRANTY

Your guzzie+Guss item is warranted to be free from any manufacturing defects for 1 year from the date of purchase under normal use and in compliance with the operating instructions. This warranty cannot be extended and an extended warranty cannot be purchased. This warranty is not transferable and extends only to the original retail purchaser and is only valid when supplied with proof of purchase. PLEASE RETAIN PROOF OF PURCHASE FOR THIS LIMITED WARRANTY. The warranty is valid only in the original country of purchase

This warranty is subject to the conditions set forth by country in which the items were purchased. Conditions may vary. guzzie+Guss will not ship replacement or repair parts out of the country of purchase. guzzie+Guss will provide replacement parts or conduct repairs as determined fitting by the company. guzzie+Guss reserves the right to exchange item with a replacement part. Some parts may be replaced with newer model parts as the items are improved over time. Please NOTE that all issues will NOT be covered by this warranty if it is deemed that your unit has been damaged because of misuse or neglect of regular maintenance.

Warranty is nullified if:

- The issue is caused by misuse or poor maintenance. Please refer to this instruction booklet for guidance on use and maintenance.
 - Damage is caused by improper installation of guzzie+Guss parts and/or accessories. Please refer to this instruction booklet for guidance on assembly and use.
 - Damage is corrosion, mold or rust caused by lack of maintenance or service.
 - Damage is due to general wear and tear, which is the result of everyday use or negligence.
 - Damage is caused by sun intensity, sweat, detergents, damp storage or frequent washings.
 - Repairs or modifications are carried out by an unauthorized third party.
 - Hitch is purchased from an unauthorized retailer. Approved retailers are listed on our website at www.guzzieandguss.com
 - Hitch is second-hand.
 - Hitch is damaged as a result of an accident, airline or freight damage.
- guzzie+Guss reserves the right to determine if warranty terms and conditions have been met. Please contact your local distributor if you have any questions regarding warranty.